

CM-3500XL INSULATION BLOWING MACHINES

Our range of CM-3500XL insulation blowing machines are designed for **large insulation applications** and for **continually daily use**. They have high capacities and are extremely robust. They are ideal for constructors for whom insulation blowing is the primary business or for the construction company with multiple installer teams.

The CM-3500XL design focus on **high material capacities** and **efficient blowing capacity** while keeping the design of the machine very compact. It provides a lot of advantages in setting up the machine and equipment in a truck or trailer. The narrow slim, high design leaves plenty of room for equipment and insulation material.

The CM-3500XL targets the **professional installer** in need of a setup with fast working speed and easy rigging on the jobsites.

The CM-3500XL offers high efficiency for all types of loose fiber materials. The uniquely **designed augers system**, combined with a **large airlock** and **powerful blowers**, make it possible to maintain high job ratios and capacities, regardless the choice of insulating material.

The CM-3500XL is the **ideal insulation machine** for blowing insulation. It is furthermore available in specially designed models for **Wet Spray** and **Commercial Spray**.



**Excellent Performance with
All Types of
Blowing Insulation Materials**

Production Rate

Cellulose 2449 kg/hour

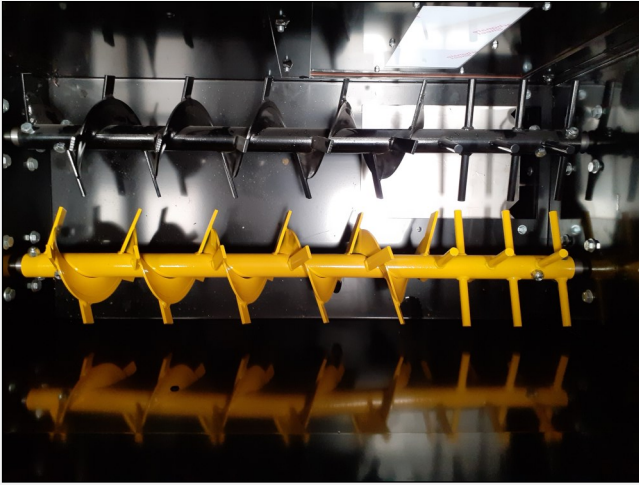
Fiberglas 1089 kg/hour

Rockwool 1225 kg/hour

Large airlock 30,5 cm x 60.9 cm



Features and Benefits



Dual Scalping Augers

Dual *scalping* augers enhance feed and eliminate bridging in hopper.

Dual stainless SlideGate controls for metering recycle and dry fiber.

Powerful dimensions of all mechanical parts guarantees a long service life.

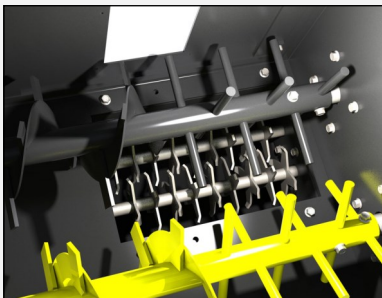
6 chamber airlock provides constant material flow - not pulsating.



Drive Motor

Powerful 3 hp / 2.21 kW motor drives the entire machine.

Gearbox and engine are easy to service.



High speed turbo-shredder maximizes fiber conditioning and production.

Option: Long Distance Wireless Remote System



Dual metering hoppers for Wet Spray

LED power plugs for quick electrical troubleshooting.



Powerful Technology

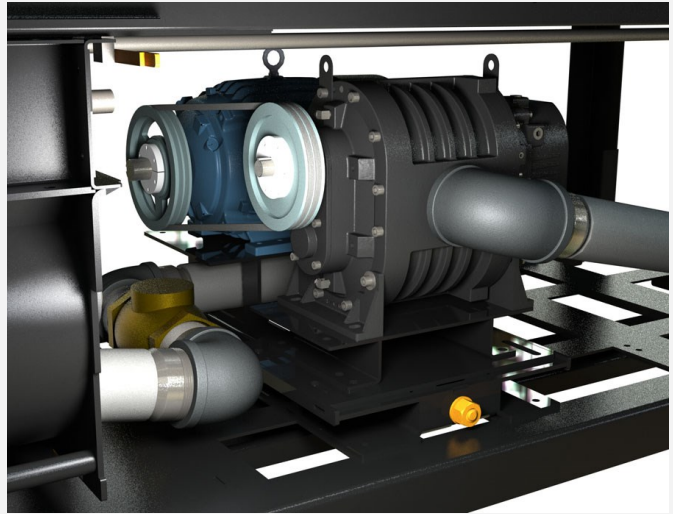
PD Blower

Positive Displacement (PD) blower with 5 hp or 7.5 hp.

Superior performance and long life.

The combination of large material hopper and PD blowers ensures high material capacity.

Constant high pressure and airflow no matter hose size and length - Ideal for long hose lengths and high material elevation.



4 Centrifugal Blowers

Blower box set-up that allows you to adjust the number of blowers and airflow to any kind of tasks.

Individual on/off function of each blower - saving power and wear.

Efficient machine with 230 Volt connection.

High blowing capacity, m3/hour.

Low price for such a powerful and versatile machine.



Side or Front Mount Options in Truck or Trailer



CM 3500XL-S Standard

Standard

The CM 3500XL-S is designed for blowing with all types of insulating fibers.

The high capacity makes it extremely efficient at jobsites in larger commercial buildings, blocks of flats or older story buildings.

The strong engine and blowing power assures that the machine can elevate the material many floors up.

Standard for CM3500XL is Full Hopper Extension (pictured). Hopper extension and lower Hopper are dividable.

All models are designed to handle additional equipment such as self-contained hose reels, dustbin collector, water tanks, generator and all the necessities for a portable and self-sustaining insulation setup.



Weights and Measures

Weight:

806 kg with 4 Blowers, 230 Volt

820 kg with 5 hp PD Blower, 400 Volt

835 kg with 7.5 hp PD Blower, 400 Volt

Dimensions (length x width x height):

272 cm x 74 cm x 138 cm

191 cm - 208 cm with Hopper Extension

Hopper Capacity:

1.06 m³ (1.95 m³ with Full Hopper Extension)

6 Chamber Airlock:

Sizes (diameter x length)

30.5 cm x 60.9 cm, 4" / 102 mm output tube

Drive Motor: 3 hp / 2.21 kW

Technical data

Blower Options:

Blowerbox - 7 amp. - 240 m³/hour per blower | 4 blowers 960 m³/hour

Airlock pressure 276 mbar

5 hp PD Blower - 280 m³/hour

Airlock pressure 414 mbar

7.5 hp PD Blower - 348 m³/hour

Airlock pressure 552 mbar

Power Requirements:

10/10/10 amp., 230 Volt, triple input, 4 Blowers

10 amp., 400 Volt, 3 phases, 5 hp PD Blower

15 amp., 400 Volt, 3 phases, 7.5 hp PD Blower

***PD = Positive Displacement Motor**

CM 3500XL-VH Vac-Hood

Vac-Hood

Economical with low power requirements.

Innovative Vacuum Hood provides a multifunction machine system.

The uniquely designed multifunction machine for wet fiber spraying. Spray fibers can be ideal for moist level controlling in metal sheet constructions and for fireproof spraying or for insulating low basements with limited heights.

Separate recycle and dry feed-gate control for precise metering of fibers when fiber spraying.

Divided Hopper Extension.



Weights and Measures

Weight:

953 kg with 4 Blowers, 230 Volt

1021 kg with 5 hp PD Blower, 400 Volt

1037 kg with 7.5 hp PD Blower, 400 Volt

Dimensions (length x width x height):

272 cm x 74 cm x 192 cm

192 cm - 208 cm with Hopper Extension

Hopper Capacity:

Dry: 0.79 m³ (1.40 m³ with Hopper Extension)

Recycle: 0.25 m³

Total: 1.04 m³ (1.65 m³ with Full Hopper Extension)

6 Chamber Airlock (Sizes diameter x length):

30.5 cm x 60.9 cm, 4" / 102 mm output tube

Technical data

Drive Motor:

3 hp / 2.21 kW

Blower Options:

Blowerbox 7 amp. - 240 m³/hour per Blower | 4 blowers 960 m³/hour - Airlock pressure 276 mbar

5 hp PD Blower - 280 m³/hour

Airlock pressure 414 mbar

7.5 hp PD Blower - 348 m³/hour

Airlock pressure 552 mbar

Power Requirements:

10/10/10 amp., 230 Volt, triple input, 4 Blowers

10 amp., 400 Volt, 3 phases, 5 hp PD Blower

15 amp., 400 Volt, 3 phases, 7.5 hp PD Blower

*PD = Positive Displacement Motor

CM 3500XL-VP Vac-Pack

Vac-Pack

Vac-Pack technology offers a low maintenance, positive pressure vacuum system with no slow down in production, air discharges into the neutral pressure hopper inside the trailer/truck with no resulting air surges, or dust.

This system offers a fast, smooth spraying application while minimizing set-up time and maximizing endurance of the system.

Integrated Proprietary Vac-Pack technology allows for vacuuming of sprayed material excess to be recycled back into the system.

Dual Long-life PD blowers provide superior vacuum and blowing performance.



Weights and Measures

Weight:

1119 kg with Dual 5 hp PD Blower, 400 Volt

Dimensions (length x width x height):

272 cm x 74 cm x 192 cm

192 cm - 208 cm with Hopper Extension

Hopper Capacity:

Dry: 1.40 m³ with Hopper Extension

Recycle: 0.25 m³

Total: 1.65 m³ with Full Hopper Extension

6 Chamber Airlock:

Sizes (diameter x length)

30.5 cm x 60.9 cm, 4" / 102 mm output tube

Technical data

Drive Motor:

3 hp / 2.21 kW

Blowers:

Dual 5 hp PD Blowers - 280 m³/hour

Airlock pressure:

414 mbar

Power Requirements:

20 amp., 400 Volt, 3 phases, 5 hp PD Blower

**PD = Positive Displacement Motor*

Features and Benefits

The Vac Packs dual Long-life PD blowers provide superior vacuum and blowing performance.

Superior performance and long life.

The combination of large material hopper and PD blowers ensures high material capacity.

Constant high pressure and airflow no matter hose size and length - Ideal for long hose lengths and high material elevation.

Increased access to blower module to assist in routine maintenance.



Separate recycle and dry feed-gate control for precise metering of fibers.

“Simple” slide gate controls for recycle and dry in a single, compact machine provide a fast, accurate application of dry blended fibers into the wall; while conserving space inside your vehicle



New Compact Vac-Pack System with reusable air screen filters provide improved performance and reliability.

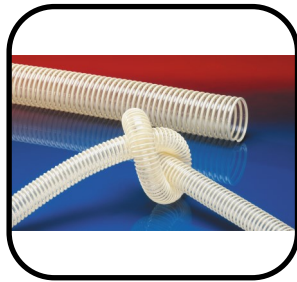
Fast vacuum speeds fills the large capacity recycle hopper quickly...allowing vacuum operator ample time to scrub walls.



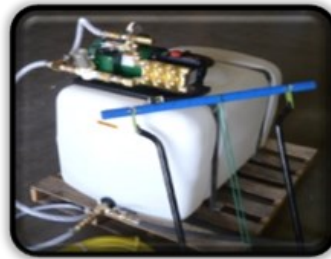
Machine Accessories



Hose Reels



Hoses & Fittings



Water Tanks



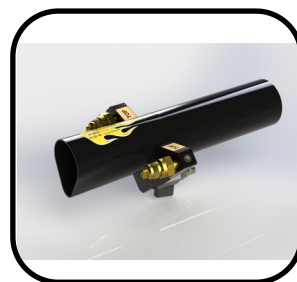
Generators



Water Pumps



Wall Scrubbers



Spray Equipment



Vacuums

Customer Support: Call +45 54 60 90 06 - mail: info@coolmachineseuropa.com

Cool Machines Inc.

Fiber Machines - Cutting Edge Cool



www.coolmachineseuropa.com